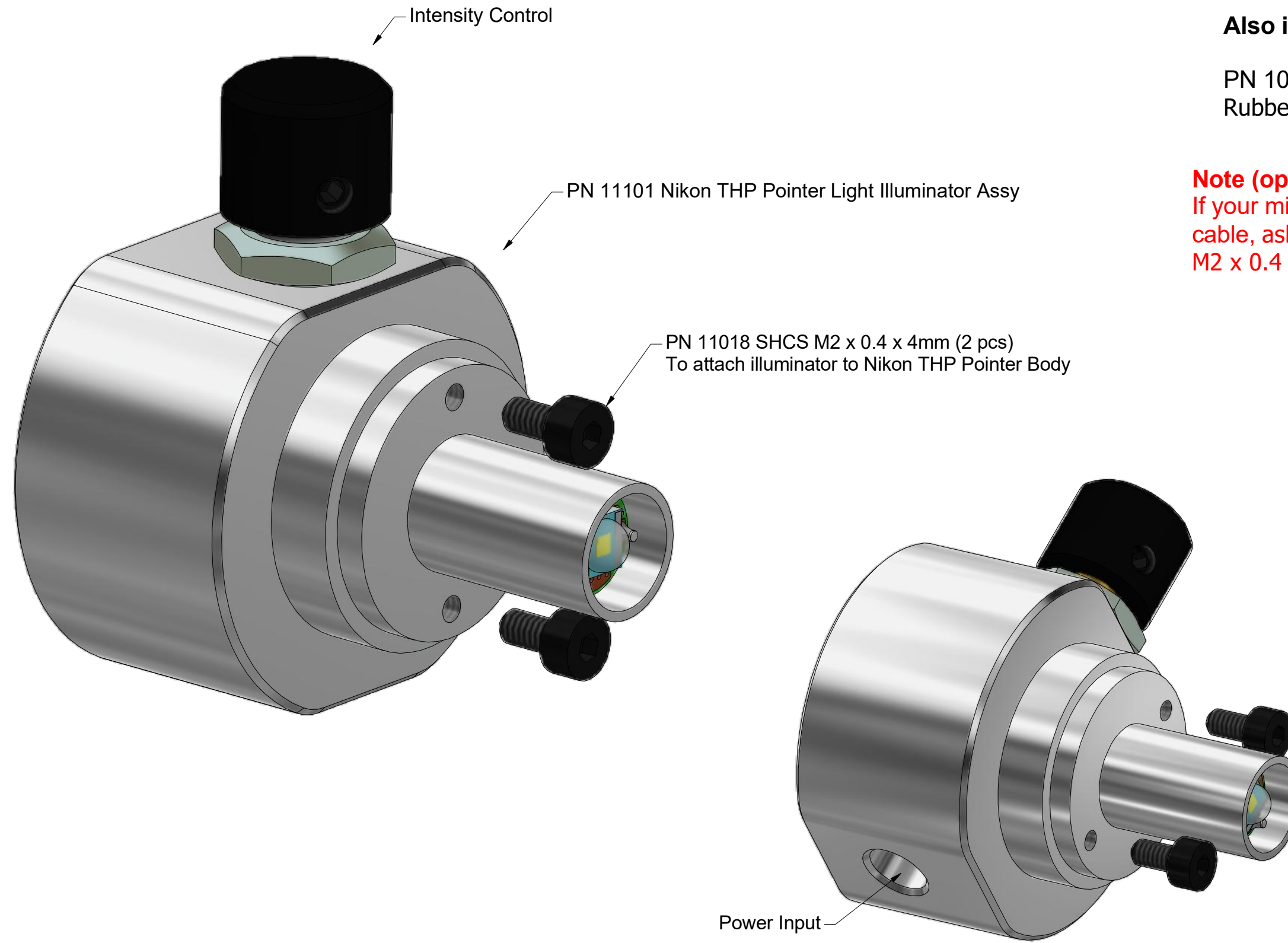


Nanodyne Replacement Illuminator for Nikon THP Pointer Light Installation Instructions: Included Items

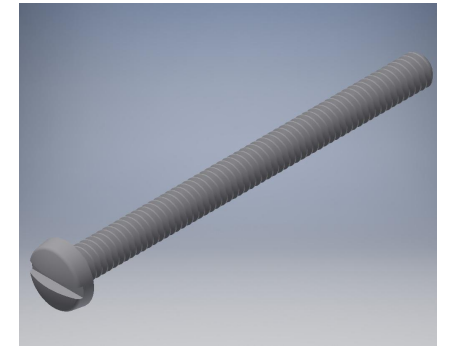


Also included but not shown:

PN 10456 1.5mm Hex Key for tightening the M2 screws
 Rubber tubing to block old power receptacle

Note (optional):

If your microscope uses fiber optic cable, ask us to add PN 11774 M2 x 0.4 x 20mm screws



PN 10733 Power Supply - XP Power 5V 1A and PN 10734 Cable Assy 1.35mm ID x 3.5mm OD RA plug to USB A, 6 foot.

The illuminator may be powered by plugging the cable into the power supply provided, or into a suitable USB port on a computer or other device.

Power supplies are subject to substitution without notice due to availability issues and changes in regulations.

Wayne Bonin	3/16/2019
PN 11102 Nikon THP Pointer Light Installation Instruction	REV 2
SHEET 1 OF 5	

Nanodyne Replacement Illuminator for Nikon THP Pointer Light Installation Instructions: Step 1. Remove Old Bulb and Covers



Photo 1a



Photo 1b

Remove the bulb cover. It twists off by hand. The screwdriver is for later.



Photo 1c

Remove the bulb.



Photo 1d

Bulb after removal.

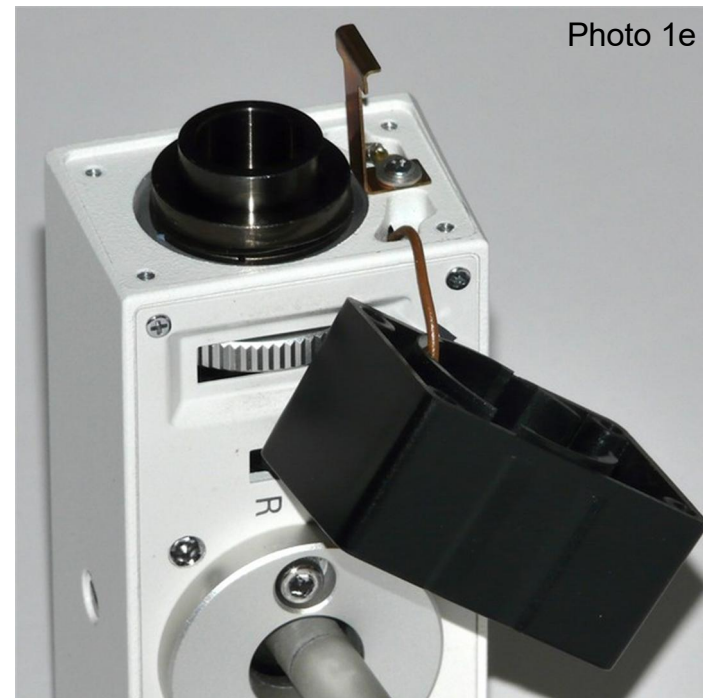


Photo 1e

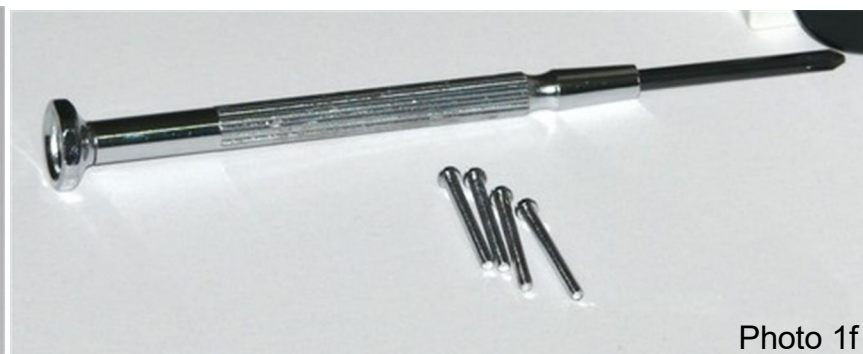


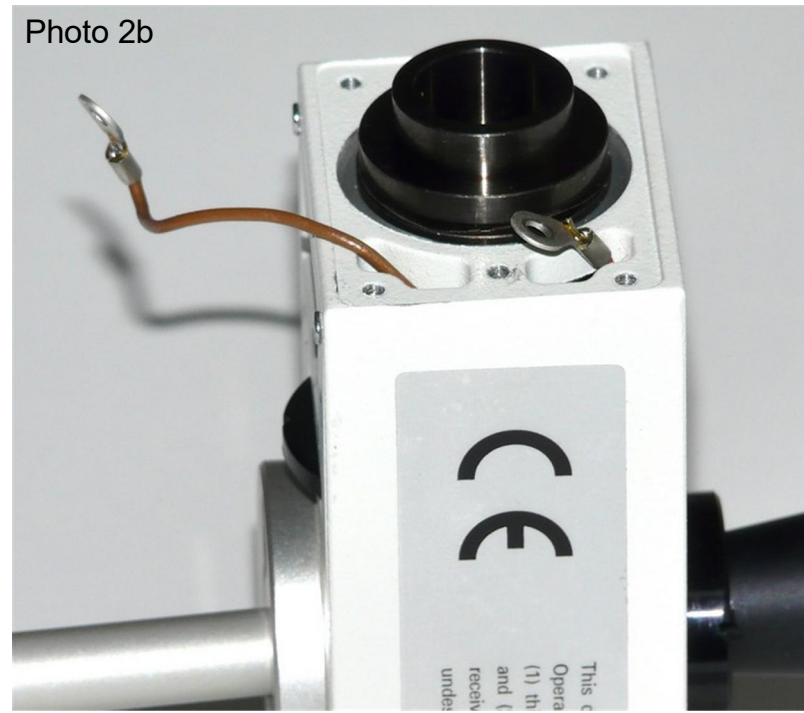
Photo 1f

Remove the 4 screws holding the black rectangular cover using a phillips screwdriver. Remove the cover.

The screws and cover will be re-used.

Wayne Bonin	3/16/2019
PN 11102 Nikon THP Pointer Light Installation Instruction	REV 2
SHEET 2 OF 5	

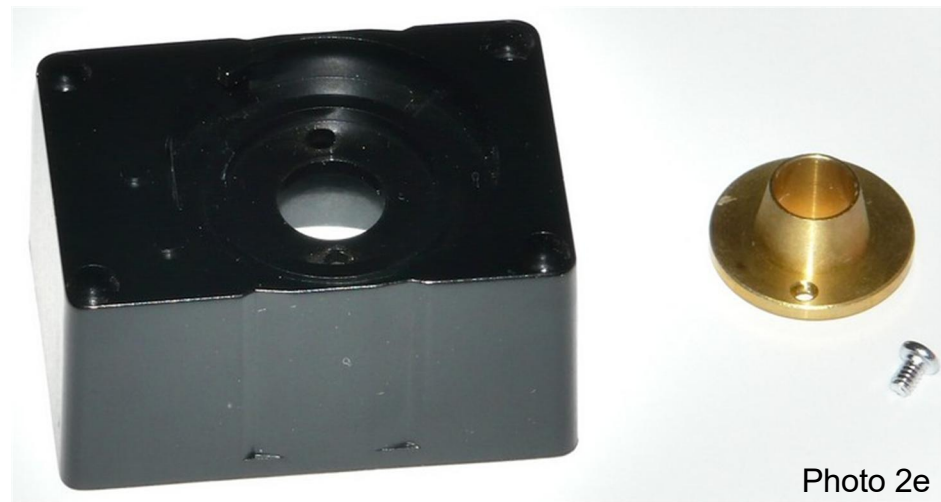
Nanodyne Replacement Illuminator for Nikon THP Pointer Light Installation Instructions: Step 2. Remove Obsolete Components



Remove the 2 screws holding the red wire to the sheet metal contact and the brown wire attached to the black cover

Re-attach the red wire terminal as shown in photo 2c to keep it out of the way. The brass contact will not be used. Cut the brown wire. It should be insulated with heat shrink tubing or electrical tape (not shown).

Remove the screw shown above to remove the brass lamp holder.



Brass lamp holder removed from black cover. The lamp holder and screw are not used.

Wayne Bonin	3/16/2019
PN 11102 Nikon THP Pointer Light Installation Instruction	REV 2
SHEET 3 OF 5	

Nanodyne Replacement Illuminator for Nikon THP Pointer Light Installation Instructions: Step 3. Attach Nanodyne light to OEM Cover



Photo 3a

Nanodyne pointer light. Note the 2 tapped holes (one is partly hidden).



Photo 3b

Attach the pointer light to the cover with the two M2 4mm screws provided. Tighten them with the 1.5mm hex key provided.

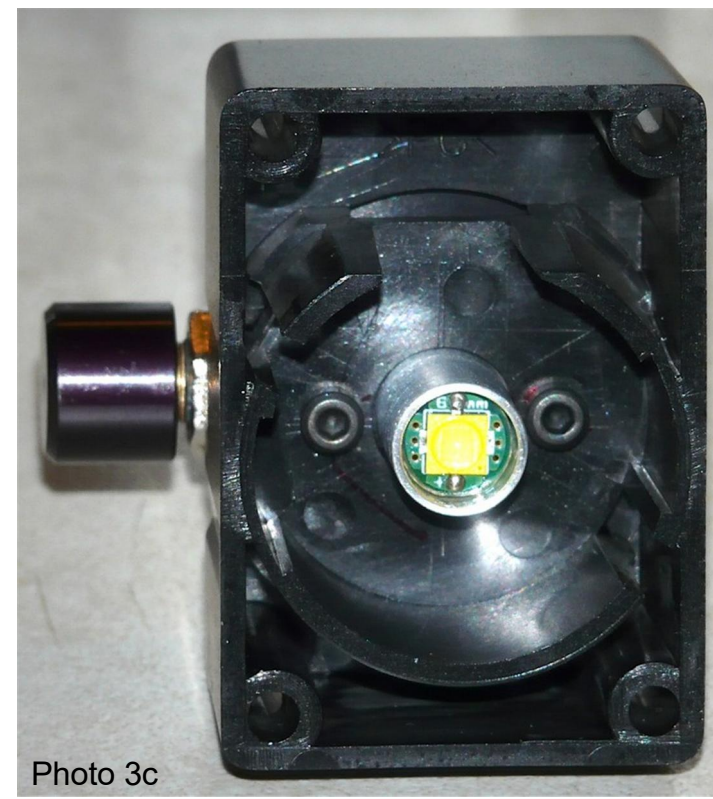


Photo 3c

Pointer light attached to cover.



Photo 3d

Note correct orientation of pointer light to cover.



Photo 3e

Ready to attach the cover with the Nanodyne pointer to the THP body.

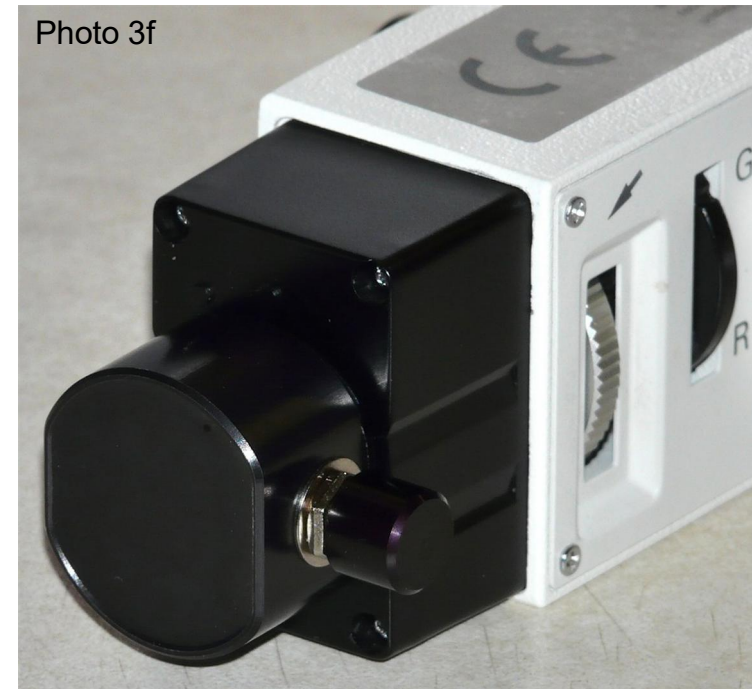


Photo 3f

Nanodyne pointer light installed.

Note that the illuminator is not centered on the cover, and the cover only fits one way on the THP body.

Be sure to attach the Nanodyne illuminator to the cover as shown in photo 3d, so the adjustment knob is in the front with the other controls (see next page).

Wayne Bonin	3/16/2019
PN 11102 Nikon THP Pointer Light Installation Instruction	REV 2
SHEET 4 OF 5	

Nanodyne Replacement Illuminator for Nikon THP Pointer Light Installation Instructions: Step 4. Block Old Power Receptacle



Photo 4a

Slip the rubber tubing over the old input power pin and cut it off flush to block the old receptacle.



Photo 4b

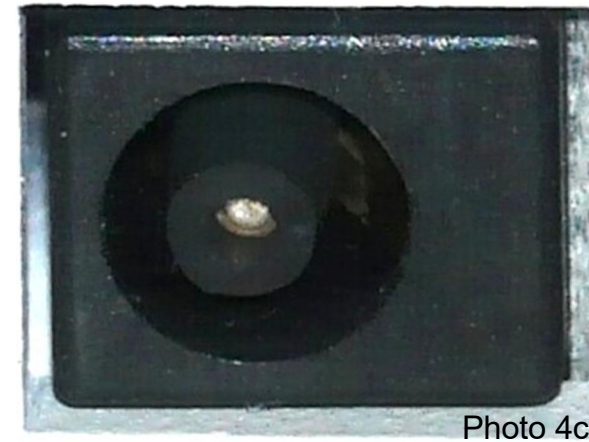


Photo 4c

Closer views of blocked old receptacle.

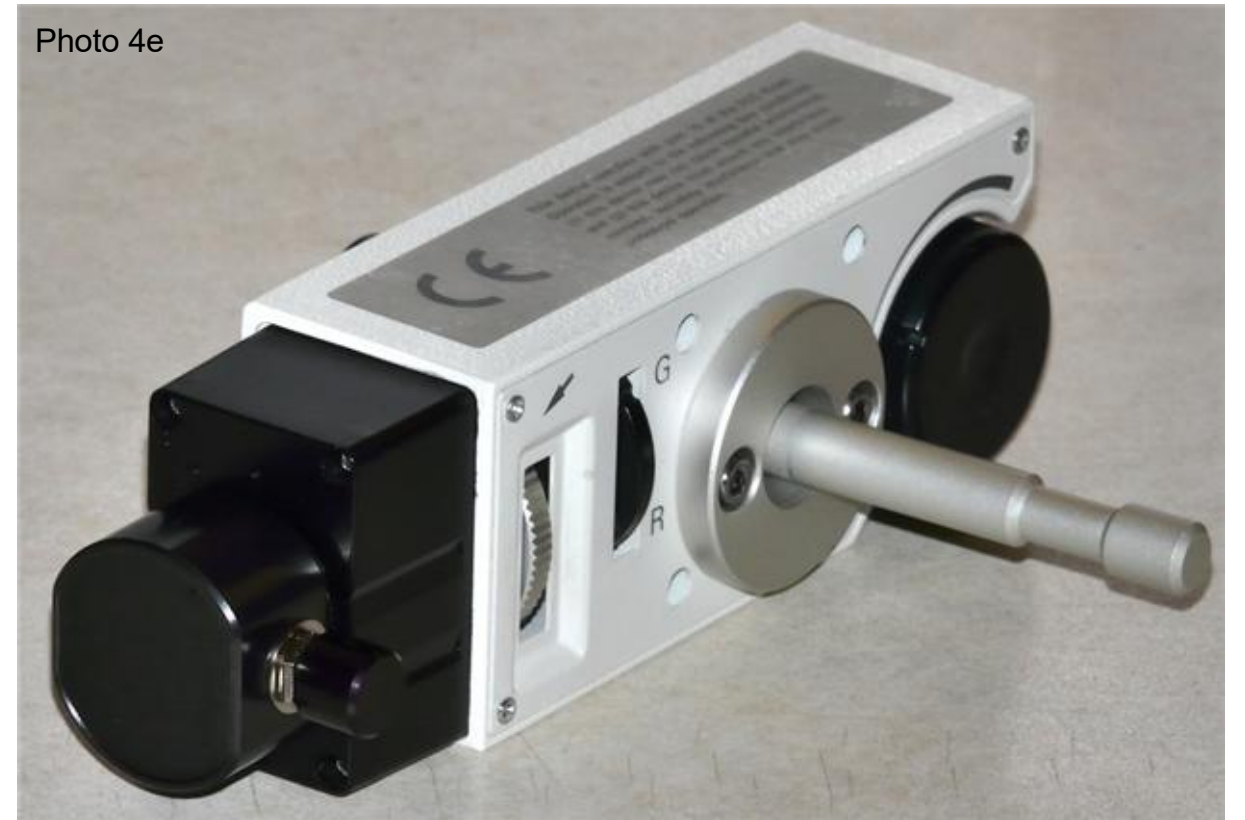


Photo 4e

Completed unit ready to attach to microscope.



Photo 4d

The power is applied by plugging in the new Nanodyne power cord to the receptacle shown in photo 4d between the white text.

Wayne Bonin	3/16/2019
PN 11102 Nikon THP Pointer Light Installation Instruction	REV 2
SHEET 5 OF 5	